

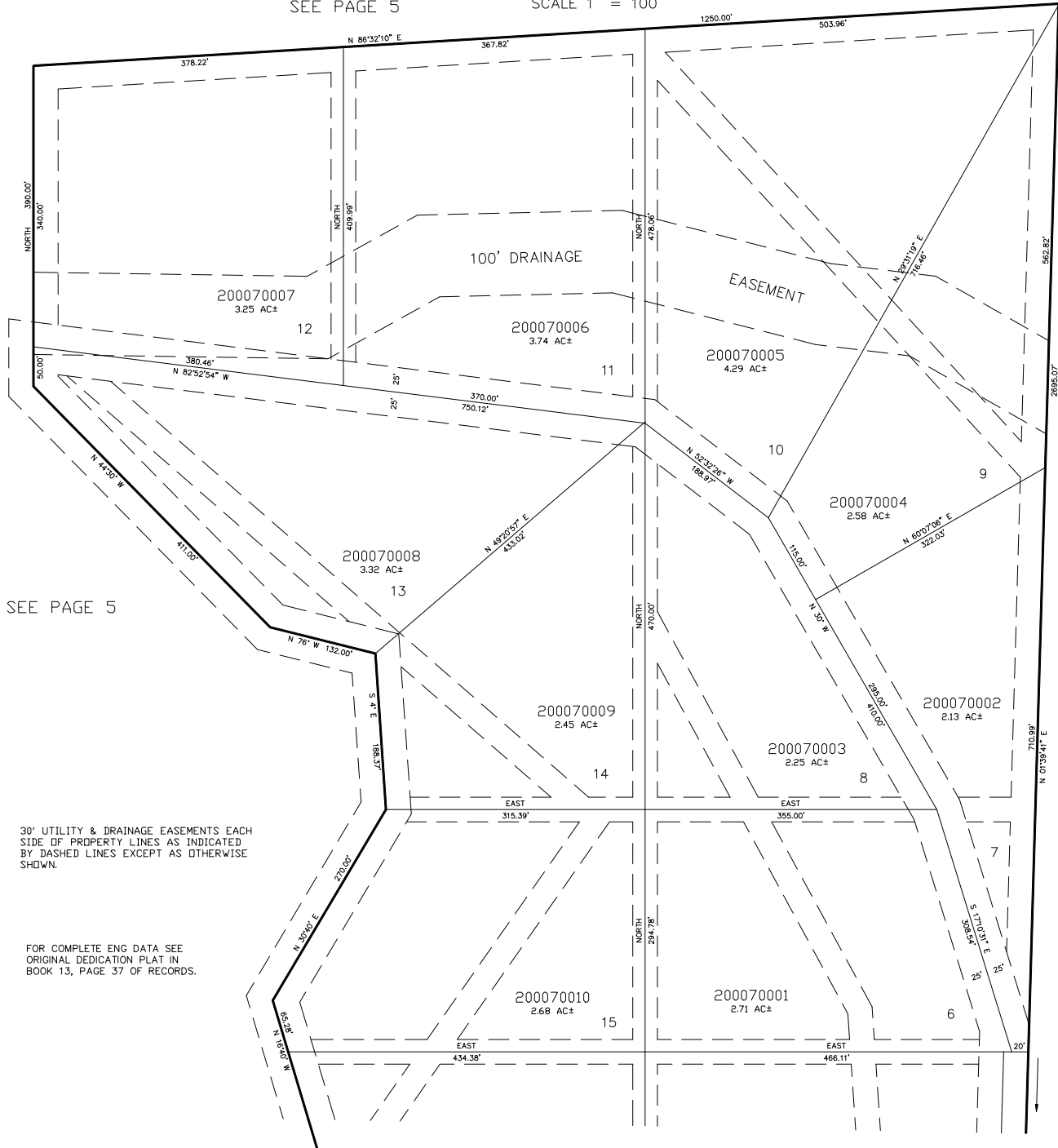
PART OF SECTION 10, T.6N., R.1E., S.L.B. & M.  
**SPURLOCK SUBDIVISION PLAT 1**  
**PLAT I**

7

TAXING UNIT: 317

SEE PAGE 5

LOTS 6 - 15  
 IN WEBER COUNTY  
 SCALE 1" = 100'



SEE PAGE 46

SEE PAGE 6